

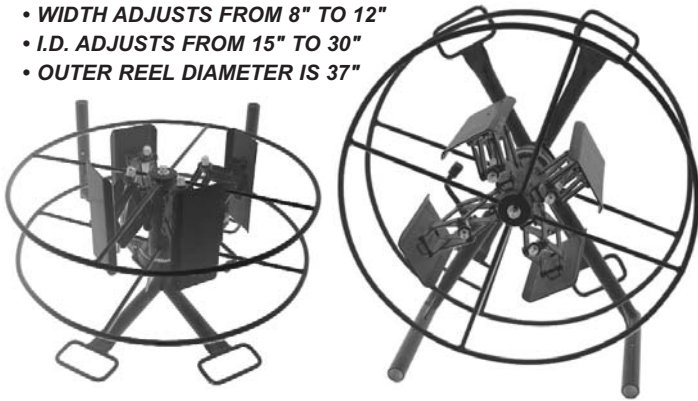


PAYOUT REEL with portable base

Cat. No. 301-H

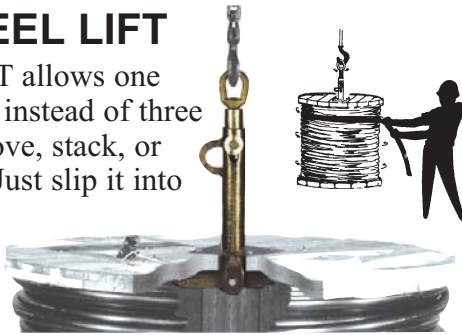
This portable payout reel is an all purpose device which can also be mounted on a truck. Reel can be set horizontally or vertically. A hand screw tension brake prevents the reel from coasting and eliminates backlash or unraveling of the wire from the spool.

- WIDTH ADJUSTS FROM 8" TO 12"
- I.D. ADJUSTS FROM 15" TO 30"
- OUTER REEL DIAMETER IS 37"



PAYOUT REEL LIFT

The REEL LIFT allows one man to do the job instead of three or four. Use to move, stack, or spin heavy reels. Just slip it into the cable reel hole, tighten the boom line and the toggle on the bottom slips into place.



The "flipping ring" allows a reel to be safely flipped from the rolling position to a non-rolling position

Cat. No.	Capacity	F/ Arbor Hole
RT20	3,000 lbs	2" - 4"
RT40	4,500 lbs	3" - 6"
RT60	12,000 lbs	2-5/8" - 6"

COLLAPSIBLE TAKE UP REEL

Cat. No. 176-A-78

This power reel attaches to the winch shaft and is designed to pick up wire in neat, compact rolls. Reel arms and supporting spiders are cast of aluminum alloy for light weight and maximum strength. Weight 70 lbs. Fits 2-7/16" shafts

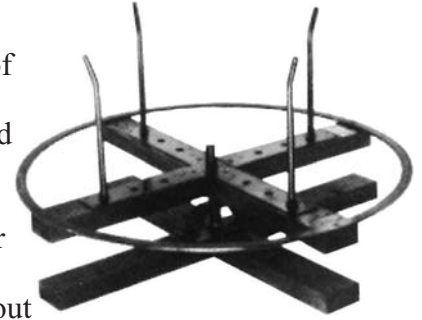


SEE REAR OF CATALOG FOR PARTS

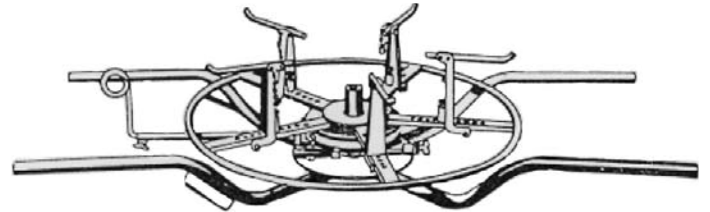
PLAIN PAYOUT REEL

Cat. No. 902

This reel is made of hardwood and is well braced and reinforced with sheet steel throughout. It is especially suitable for gang mounting on a wagon when paying out several wires at one time. Roll pins adjust for 12," 18," and 24" coils. Weight: 40 lbs.



COMBINATION PAYOUT AND TAKE UP REELS



Cat. No. 3555 - For Copper - 34" max coil size

Cat. No. 4533 - For aluminum - 37" max coil size

Here is a payout and take-up Reel ALL IN ONE! It is extremely lightweight, yet strong and durable.

The frame is made of stout tubing. The guide pins adjust to take wire coils from 13" to 27" I.D. and fold flat so that the whole reel is easy to carry and store. An automatic brake keeps tension on the reel preventing backlash and automatically releases and resets itself as the wire is pulled.

This unit will convert into a take-up reel by attaching the two vertical braces and handle. The carrier frame is removable so that the reel can be bolted to a truck. A thumb screw is provided for grounding attachment.



GUY WIRE DISPENSER

Cat. No. 6150

This Guy Wire Dispenser handles full coils with ease while storing partially used coils safely.

- 1) Raise the pivot swing arm, 2) drop in the coil, 3) lower the arm, 4) fasten bolt & wing nut, 5) cut bands and 6) feed strand. 6" x 30" Wgt: 10 lbs.

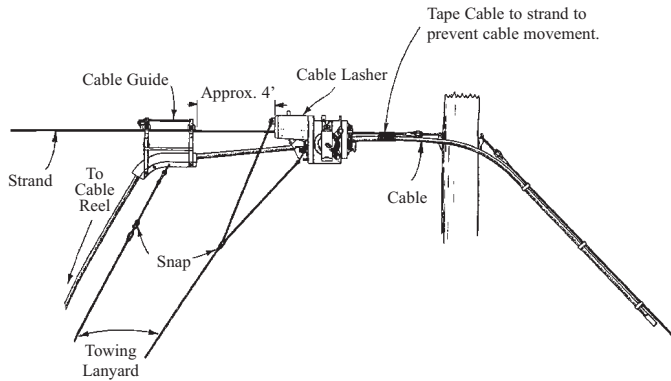


Cat. No. 61501 8" x 36" Wgt: 12 lbs.



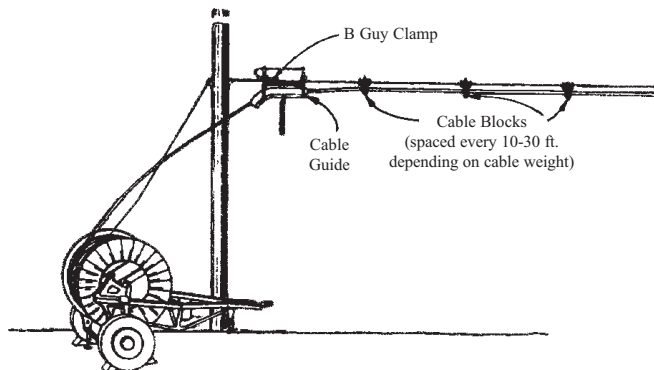
CABLE LASHING

MOVING REEL METHOD NEW CONSTRUCTION



The Moving Reel Method of placing lashed aerial cable is used where a cable reel trailer or aerial lift truck can be moved along the pole line and there are no obstructions to prevent raising the cable to the suspension strand. This method may be used when placing an initial cable on suspension strand or when lashing cable to an existing lashed cable and strand.

STATIONARY REEL METHOD



The Stationary Reel Method of placing lashed aerial cable is used where a reel of cable remains in one position while the cable is paid off up to cable blocks located on the strand. This method may be used when attaching initial cable to a strand (New Construction) or when attaching cable to an existing lashed cable and strand (Overlash Construction).

Select appropriate cable blocks depending on new or overlap construction and type of cable being lashed (Fiber Optic, Copper, or Coaxial).

C2 CABLE LASHER

Cat. No. 71422

For cables or cable bundles up to 1-7/8 in. on strands 1/4 in. to 3/8 in. Positive mechanical brake prevents lasher back-up until brake is released. By simply depressing the latch of the strand tension roller assembly and turning the assembly 1/4 turn, the user can add cable to the existing bundle up to a total of 1-7/8 inches. A larger drive housing opening prevents wear during overlap procedure. This new "C2" Lasher includes a re-movable front handle for overlapping. When removed, a generous 2 1/16 in. opening allows for smooth overlapping to an existing bundle. An overlap (optional) handle (P/N 28120) is available which can be placed on the front of the machine without any interference of the opening when overlapping.



Built to last, the parts are made from plated steel, stainless steel, brass or aluminum. Unit contains sealed and self-lubricating bearings to minimize maintenance and assure durability. Wt. 33 lbs.

J2 CABLE LASHER

Cat. No. 86070

For cables to 3 in. on strands 1/4 in. to 7/16 in. This machine has overlapping capability with the turn of a lever. Positive internal gear-to-gear mechanism has no chains or belts to stretch, slip or break. Positive mechanical brake prevents lasher reverse until brake is released. Wt. 46 lbs.



TOWING LANYARD

Cat. No. 70190

Towing Lanyard 35 ft. Used for pulling cable lashers and aerial cable guides. Attaches to lasher bridle. Wt. 6 lbs.



AERIAL CABLE GUIDE

Cat. No. 70055

For new construction only, this guide provides the proper lead to the first block during the cable pullout phase of a lashing operation. Cable shoe has a unique non-stick, highly polished stainless steel surface to minimize cable friction.





LASHING WIRE

Made from various grades of stainless steel and designed to fit the C, J2 or Apollo Lashers. Wire diameter is either .038 or .045 in. diameter, in lengths of 1200 or 1600 ft. Sold in cartons of 6 coils each.



430 STAINLESS STEEL LASHING WIRE

for general use in ordinary atmospheric conditions

302 STAINLESS STEEL LASHING WIRE

used in corrosive environments and has a higher tensile strength

316 STAINLESS STEEL LASHING WIRE

provides the best insurance against failure under the most severe atmospheric conditions including chlorides and sulfides.

Cat. No.	Description	Weight
71530	430 SS .045" x 1200'	39 lbs./ctn.
71533	302 SS .045" x 1200'	39 lbs./ctn.
71534	316 SS .045" x 1200'	39 lbs./ctn.
71535	302 SS .038" x 1600'	39 lbs./ctn.

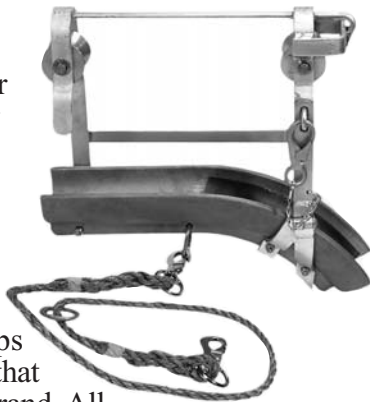
TO ESTIMATE AMOUNT OF LASHING WIRE FOR A PARTICULAR JOB, USE THE FOLLOWING:

- ADD 5% TO LENGTH FOR CABLE BUNDLES UP TO 1.5 IN. DIAMETER
- ADD 10% TO LENGTH FOR CABLE BUNDLES RANGING FROM 1.5 TO 3.0 IN. DIAMETER
- ADD 20% TO LENGTH FOR CABLE BUNDLES EXCEEDING 3.0 IN. DIAMETER

DUAL-LASHING AERIAL CABLE GUIDE

Cat. No. 08007

This unit offers the versatility of working for new installations or for overlashing cable to existing plant. Cast aluminum shoe with a steel insert on the face provides longer wear life. The shoe is suspended on steel straps from two strand rollers that lock securely onto the strand. All parts are plated or painted for corrosion resistance. Weight: 11 lbs.



LASHING WIRE GRIP

Cat. No. 08605

Temporarily secures any size lashing wire to suspension strand before releasing tension. Single grip groove fits all strand sizes. Wt. 10 oz.



D LASHING WIRE CLAMP

Cat. No. 07886

For lashing wire termination. Paired grooved plates, threaded stud equipped w/flange shoulder, two hexagonal nuts, washer. Long-end nut tightens clamp on strand; short-end nut terminates wire. Hot-dipped galvanized finish. Clamping range: 1/4 in. to 7/16 in. 100/pk. Wt. 15 lbs.



FIBERGLASS EXTENSION HANDLE SET

Cat. No. 15310

21' set consists of:

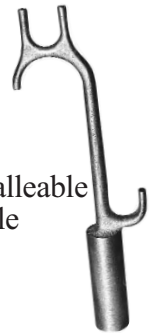
- 3- Cat. No. 24194 6' Handle Section
- 1- Cat. No. 24193 3' Handle Section



WIRE RAISING TOOL

Cat. No. 06355

Two hooks place drop wires and cable. Malleable iron casting machined for Extension Handle mounting. Wt. 1 lb. 3 oz.



B CABLE GUARDS

These 8 in. long slit polyethylene tubes are available in four (4) different diameters to help prevent cable sheath abrasion where strand is attached to poles. Standard pack: 25.



Cat. No.	Diameter
74218	1/2"
74222	1"
74226	1-1/2"
74228	2"



CABLE BLOCK

Cat. No. 73305

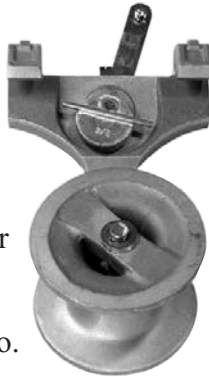
This light-duty block is used for new construction only where the strand is 1/4" and the cable being supported is under 1" diameter. The high strength aluminum frame has a spring-loaded steel-retaining pin to keep the cable on the nylon roller. Wt. 4 oz.



CABLE BLOCK

Cat. No. 75000

Perfect for medium-duty new construction, this block's cast aluminum frame and roller can support cable up to 2-3/4" diameter on 3/8" strand. Bi-directional locking lever means it won't move along the strand until you want it to. Wt. 4 lbs.



D CABLE BLOCK

Cat. No. 72680

Supports aerial cable to 2-3/4" diameter. Heat-treated aluminum alloy frame. Oilite bearings on sheave. Strand hooks have steel inserts on bearing surfaces. Bi-directional locking lever.

Wt. 3 lbs. 12 oz.



D CABLE BLOCK LIFTER

Cat. No. 07163

Attaches to Extension Handles and is used to place 75000 and D Cable Blocks and light duty B Cable Blocks from the ground when access with a bucket truck is not available. Bi-directional hook for right or left-hand positioning. Wt. 12 oz.

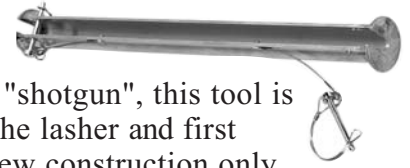


CABLE BLOCK PUSHER

Cat. No. 70431 24"

Cat. No. 70432 36"

Commonly called the "shotgun", this tool is positioned between the lasher and first cable block during new construction only. Its aluminum frame comes with locking pins to keep it on the strand. Large rounded flanges keep the lasher from riding up over the pusher. Available in two lengths: 24" and 36". Wt. 2 lbs. & 3 lbs.



UNIVERSAL CABLE BLOCK PUSHER

Cat. No. 70018

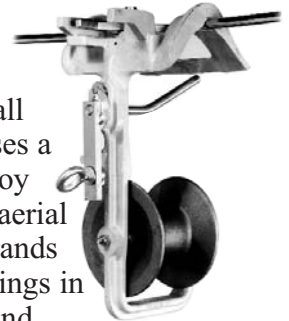
This rugged tool makes the lashing process smoother by maintaining the proper cable lead between the lasher and the cable block. The slotted steel tube has rotatable sleeves at each end to lock the unit on the strand. Standard length 24". Wt. 2.4 lbs.



F CABLE BLOCK

Cat. No. 08093

The most complete solution for all new or overlash construction. Uses a sturdy heat-treated aluminum alloy frame that supports the heaviest aerial cable to 2-3/4 in. diameter on strands up to 3/8 in. Includes Oilite bearings in sheave with steel inserts in strand hooks for added strength. Bi-directional locking lever means it won't move along the strand until you want it to. Available with a spring steel retainer to keep lighter cables on the roller. Wt. 4 lbs.



Cat. No. 70193

Same as 08093 but with retainer

F CABLE BLOCK LIFTER

Cat. No. 08099

Attaches to Extension Handles and is used to place F Cable Blocks from the ground when access with a bucket truck is not available. Bi-directional hook for right or left-hand positioning. Wt. 12 oz.



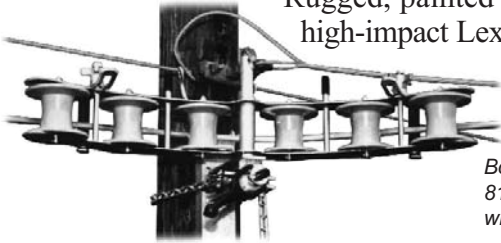
90° CORNER BLOCK

Cat. No. 8101930

Designed to guide telephone and fiber cables up to 2-3/4" in diameter around corners as tight as 90° during back-pull method. Allows continuous pulling of cable without cutting and splicing at corners.



Rugged, painted steel frame with high-impact Lexan 101 rollers.



Weight: 17 lbs.

Both 8101930 and 8103530 are available with cast rollers

45° CORNER BLOCK

Cat. No. 8103530

Similar to 90° bracket shown above. 45° corner block can be used as a pole set up chute when combined with our #1044 pole bracket and #1060 adapter, as shown.



Cat. No. 8104400 Pole Bracket

Cat. No. 8106000 Adapter

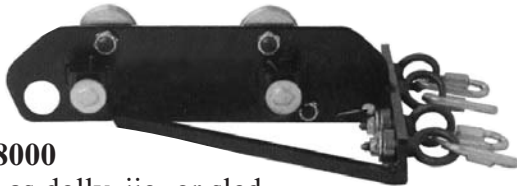


CABLE PULLER

Cat. No. 8108000

Referred to as dolly, jig, or sled, the multiple cable puller is designed to solve the problem of pulling more than one cable with total control and protection of cable.

This tool will pull up to 4 cables permitting them to swivel independently and preventing tangling. A strand brake prevents the puller from backing up when pullout tension stops thus preventing the cables from sagging between the multiple cable blocks or at the pole. It stays on the strand regardless of the towing angle and is shaped to fend off tree branches. Eyelets are designed to break at 370 to 400 lbs. limiting cable damage.



CLIP-ON CABLE BLOCK

Cat. No. 87265

Tempered spring steel block supports light-duty cables up to 1 in. diameter. Can be used for new construction or when overlashing to an existing bundle up to 2 in. diameter 10 pieces/package.

Wt. 11 lbs./pk.



CABLE BLOCK

Cat. No. 10700

A cast aluminum frame and roller makes this perfect for medium duty lashing of cables up to 2 in. diameter. Can be used for new or overlap construction if the existing bundle is under 1 in. diameter. Its V-notch housing allows strand to wedge in the frame for stability during cable pull out.

Wt. 2 lbs.



Cat. No. 10701

Same as the 10700 Cable Block, but equipped with a rubber roller.

Wt. 2 lbs.



B CABLE BLOCK

Cat. No. 70336

Another medium duty block for supporting cables up to 1-3/8 in. diameter on either new strand or a cable bundle up to 2 in. diameter. Equipped with a non-skid surface on underside of frame to limit movement during cable pull out. Retaining arm keeps cable on roller. Wt. 1 lb.



4" OVERLASH ROLLER

Cat. No. 87210

A simple, inexpensive solution for lashing cables or bundles of cable up to 4 in. diameter. A spring-latch gate encloses the cable(s) and strand within the frame. The light steel frame allows "in field" straightening if dropped or bent. Wt. 1 lb.





UNIVERSAL STRINGING BLOCKS



These stringing blocks with Timken roller bearings, are made from high strength aluminum alloy cast in permanent molds for uniformity. *Sheaves can be lined with either neoprene or urethane.*

A truly universal model that may be suspended or mounted, to or from, INSULATORS & POLE or CROSS ARM BRACKETS.

This stringing block attaches to the accessories shown, without extra fittings, by a safety locking pin.



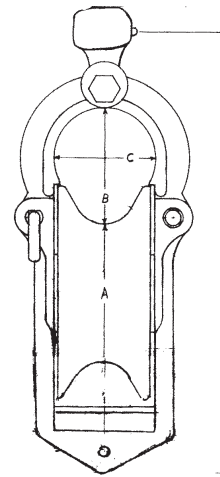
SB-SH

YBC-30

BC-30

BE-30

Cat. No.	Description
SB-7	7" Universal Stringing Block with socket eye
SAFE WORK LOAD: 2,500 LBS. - WEIGHT: 8.4 LBS.	
IF LINED SHEAVES ARE DESIRED, ADD "-U" (URETHANE) OR "-N" (NEOPRENE) TO END OF PART NUMBER	



7" - SB-7

SPECIFICATIONS	
SB-7	
A	4.5"
B	3.5"
C	3.13"
D	14"
Capacity	
No Liner	2"
With Liner	1.75"

CROSS ARM BRACKET

Cat. No. SB-CB

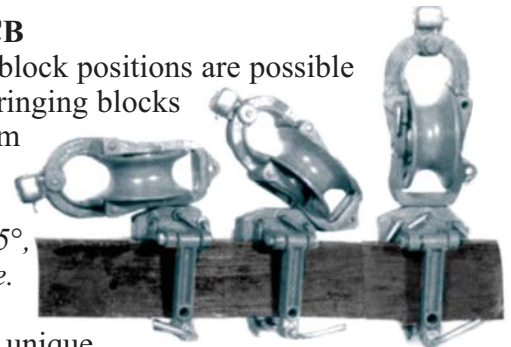
Any of five block positions are possible by attaching stringing blocks to this cross arm bracket:

vertical, 67.5°, 45°, 27.5°, and right angle.

The clamping arrangement is unique.

A single handle screw grips cross arms 4" x 4" to 6" x 4" quickly and securely. Chain clamps are available upon request for larger arms and extra heavy duty applications.

The SB-CB bracket will also accept Sherman & Riley, Campbell, Pengo, and Bethea blocks.



CLIPPING HOOK

Cat. No. HLCH

This Clipping Hook is designed to safely handle up to 2-1/2" conductor on or off the structure. Wgt. 5lbs.

Order shackles separately





INSULATOR LIFTER

Cat. No. LH95

This 10" dia. bell lifter is rubber coated to protect porcelain insulators. 8,000 Test Load Wgt: 65 lbs.



LIGHTWEIGHT LIFTER

Cat. No. PSC400-2927

This high-density, 12.6" dia. bell lifter is made of sturdy polyethylene. 400 Test Load Wgt: 13.5 lbs.



TWO OR THREE BUNDLED CONDUCTORS HEAD BOARDS



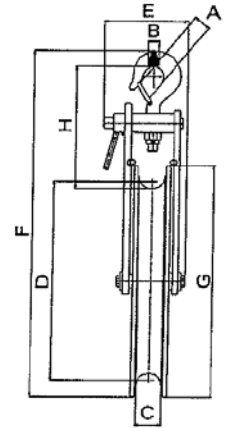
Specifically designed to connect the pulling rope, max 15/16 in diameter, with 2 or 3 bundled conductors. The equipment includes the necessary rope lengths and swivel joints; quantity and models are indicated in the following tables. SWL 5:1

Part Number	Dimensions [in]			Breaking Load [lbs]	Weight [lbs]	For Pulleys	Equipment			Bundled Type	Note
							Swivel Joints		Steel Rope Section		
	A	B	C				Part #	0335	0345		
0220	11-1/2	6-5/16	14-3/8	63,000	297	7205 7200	2	1	No. 1-98.5 ft.	2 conductors	
0225	11-1/2	6-5/16	14-3/8	63,000	346	7200 7210 7220 7225	3	1	No. 1-98.5 ft. No. 1-49.3 ft.	3 conductors	balance 1-3
0212	11-1/2	6-5/16	14-3/8	63,000	346	7225 7235	3	1	No. 1-98.5 ft. No. 1-49.3 ft.	2 conductors	balance 1-2
0230	13-11/16	6-5/16	16-5/16	63,000	315	7300 7215	2	1	No. 1-98.5 ft.	2 conductors	
0210	13-11/16	6-5/16	16-5/16	63,000	364	7215 7400 7230 7240	3	1	No. 1-98.5 ft. No. 1-49.3 ft.	3 conductors	balance 1-3
0205	13-11/16	6-5/16	16-5/16	63,000	364	7240 7245	3	1	No. 1-98.5 ft. No. 1-49.3 ft.	3 conductors	balance 1-2



GUARD ROPE PULLEYS

The pulley wheels are made of galvanized steel and mounted on ball bearings; the pulley frames are made of galvanized steel. The pulleys can be supplied with three types of connections: fixed (B1), swivel-type (C1) or with hook provided with safety lock (D1). SWL 5:1



Part Number	Type of Connection	Dimensions [in]								Breaking Load [lbs]	Weight [lbs]
		A	B	C	D	E	F	G	H		
2010	B1	1	11/16	2-9/16	9	5-7/8	18	11	7-1/2	16,000	24
2020	C1	1-3/8	11/16	2-9/16	9	5-7/8	20	11	8-11/16	16,000	24
2030	D1	15/16	11/16	2-9/16	9	5-7/8	18	11	7-5/16	16,000	24

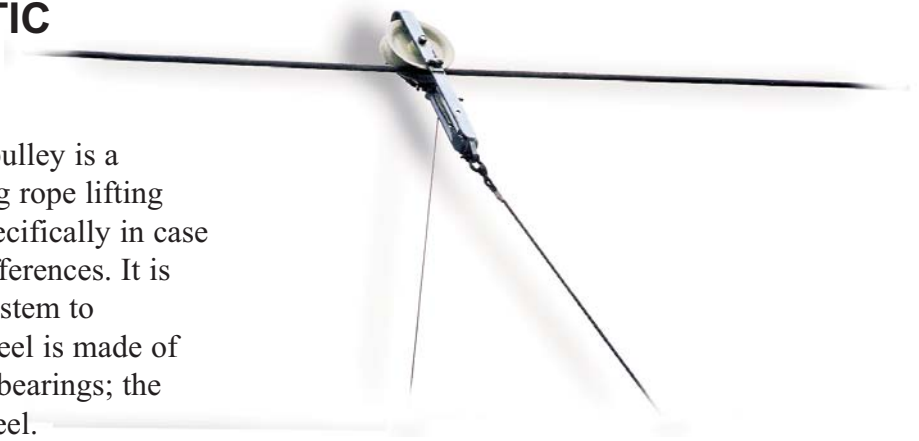
ANTI-LIFTING AUTOMATIC RELEASE PULLEY

Cat. No. 2000

The anti-lifting automatic release pulley is a special device that prevents the pulling rope lifting with respect to the theoretical line, specifically in case of towers with considerable height differences. It is equipped with an automatic release system to facilitate recovery operations. The wheel is made of galvanized steel and mounted on ball bearings; the pulley frame is made of galvanized steel.

Breaking Load: 18000 lbs.

Wgt: 44 lbs.



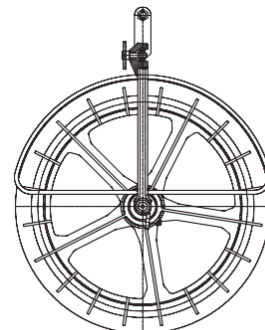
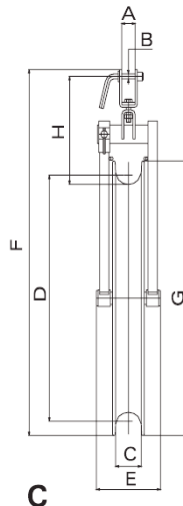
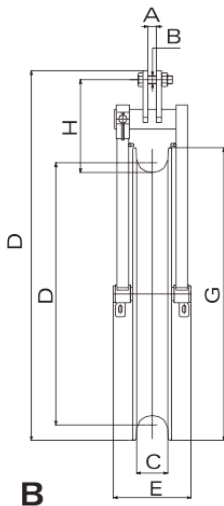


SINGLE CONDUCTOR PULLEY

The pulley wheels are made of aluminum alloy mounted on ball bearings; the groove is lined by a neoprene ring or by wear-proof interchangeable nylon sectors, or aluminum sectors. The frame is made of galvanized steel. The pulleys can be supplied with three types of connections: fixed (B), swivel-type (C) or with a hook supplied with safety lock. Grounding device or complete conductive sheaves can be supplied on demand. SWL5:1



Part Number		Type of Connection	Dimensions [in]								Breaking Load [lbs]	Weight [lbs]
Neoprene	Nylon		A	B	C	D	E	F	G	H		
7045	----	B	1	13/16	2-11/16	15	7	31	20	12	22,000	42
7500	----	C	1-9/16	13/16	2-11/16	15	7	33	20	14	22,000	44
7050	7060	B	1	13/16	2-11/16	19	7	33	24	10	22,000	48
7600	7065	C	1-9/16	13/16	2-11/16	19	7	35	24	12	22,000	55
7000	7000NY	B	1	13/16	2-11/16	25	7	39	30	10	22,000	62
7700	7085	C	1-9/16	13/16	2-11/16	25	7	41	30	12	22,000	64
7100	7105	B	1	13/16	3-3/4	25	8	39	30	10	27,000	70
7800	7110	C	1-9/16	13/16	3-3/4	25	8	41	30	12	27,000	70
7125	7125NY	B	1	13/16	2-11/16	31	7	45	34	10	27,000	70
7900	7135	C	1-9/16	13/16	2-11/16	31	7	41	34	12	27,000	72
7150	7155	B	1	13/16	3-3/4	31	8	44	35	10	27,000	84
7160	7165	C	1-9/16	13/16	3-3/4	31	8	46	35	12	27,000	86
----	7180	B	1	13/16	3-3/4	39	8	52	43	10	27,000	108
-----	7185	C	1-9/16	13/16	3-3/4	39	8	54	43	12	27,000	110
Aluminum 7000AL		B	1	13/16	2-11/16	26	7	39	30	10	22,000	62
7125AL		B	1	13/16	2-11/16	31	7	45	34	10	27,000	70





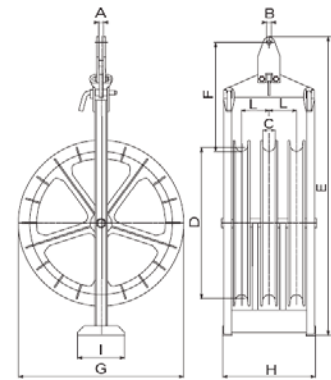
TWO OR THREE BUNDLED CONDUCTORS

The pulleys are suitable for stringing two or three bundled conductor lines. The wheels are made of aluminum alloy; the lateral ones are mounted on ball bearings with groove lined by a neoprene ring; the central one is mounted on double-row ball bearings with grooves made up of wear-proof interchangeable nylon sectors. The frame is made of galvanized steel. The pulleys are supplied with fixed connection. Grounding device or complete conductive sheaves can be supplied on demand. SWL 5:1



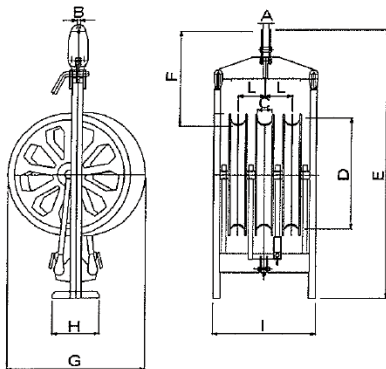
Part Number	Dimensions [in]									Breaking Load [lbs]	Weight [lbs]
	A	B	C	D	E	F	G	H	I		
7220-18	1	15/16				22		26	9	27,000	242
7205	1	15/16	2-11/16	19	50	22	24	19	9	27,000	209
7300	1	15/16	3-3/4	25	56	22	30	22	9	40,000	287
7210	1	15/16	2-11/16	31	60	22	34	19	9	40,000	276
7215	1	15/16	3-3/4	31	60	22	35	22	9	40,000	353
7400*	1	15/16	3-3/4	39	68	22	43	22	9	45,000	437

*Lateral wheels with nylon lining



TWO OR THREE BUNDLED CONDUCTORS DETACHABLE PULLEYS

The pulleys are suitable for stringing two or three bundled conductor lines. The pulleys are made up of a special galvanized steel frame and three single pulleys. The single pulleys can be used separately. The wheels are made of aluminum alloy mounted on ball bearings; the lateral ones have the groove lined by a neoprene ring; the central one has the groove made up of wear-proof interchangeable nylon sectors. The pulleys are supplied with fixed connection. Grounding device or complete conductive sheaves can be supplied on demand. SWL 5:1



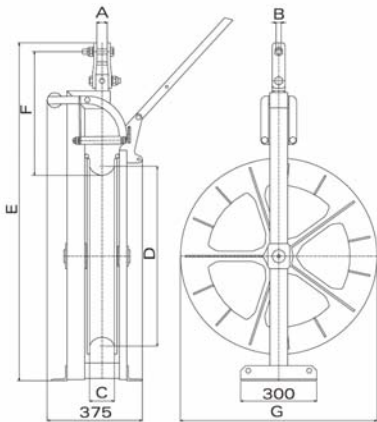
Part Number	Dimensions [IN]										Breaking Load [lbs]	Weight [lbs]
	A	B	C	D	E	F	G	H	I	L		
7220	1	15/16	2-11/16	19	59	23	27	9	22	5	27,000	300
7225	1	15/16	2-11/16	25	61	23	33	9	22	5	27,000	333
7230	1	15/16	3-3/4	25	65	23	33	9	26	7	40,000	366
7235	1	15/16	2-11/16	31	69	23	37	9	22	5	40,000	366
7240	1	15/16	3-3/4	31	70	23	37	9	26	7	40,000	419
7245*	1	15/16	3-3/4	39	78	23	46	9	26	7	45,000	503

*Lateral wheels with nylon lining



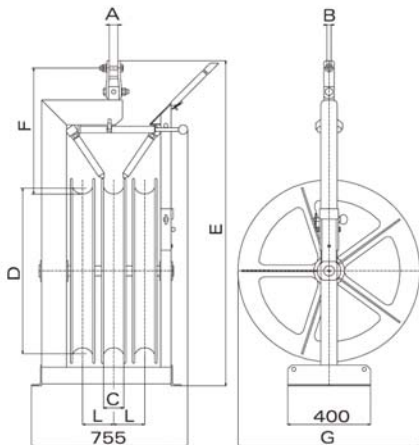
PULLEYS FOR HELICOPTER STRINGING

The pulleys are suitable for stringing the pilot rope by a helicopter. The pilot rope is automatically positioned in the (central) wheel. Special guides ensure the correct positioning of the rope during stringing operations. The wheels are made of aluminum alloy mounted on ball bearings; the lateral ones have the groove lined by neoprene ring; the central one has the groove made up of wear-proof interchangeable nylon sectors. The frame is made of galvanized steel. The pulleys are supplied with fixed connection. Grounding device or complete conductive sheaves can be supplied on demand. SWL 5:1



SINGLE PULLEYS Mod. CES

Part Number	Dimensions [in]							Breaking Load [lbs]	Weight [lbs]
	A	B	C	D	E	F	G		
3600	1	15/16	2-11/16	25	49	16	30	27,000	106
3700	1	15/16	3-3/4	25	49	16	30	27,000	137
3800	1	15/16	2-11/16	31	54	16	35	27,000	143
3900	1	15/16	3-3/4	31	54	16	35	27,000	154
3400	1	15/16	3-3/4	39	62	16	43	45,000	187



TWO OR THREE BUNDLED CONDUCTORS PULLEYS Mod. CET

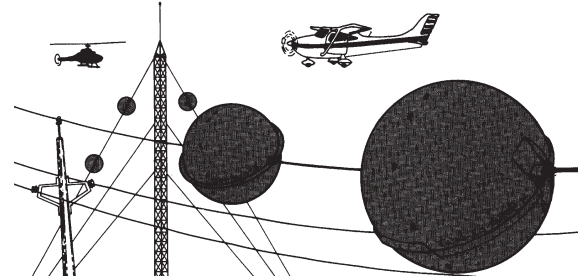
Part Number	Dimensions [in]								Breaking Load [lbs]	Weight [lbs]
	A	B	C	D	E	F	G	L		
3050	1	15/16	2-11/16	25	65	30	30	5	40,000	353
3300	1	15/16	3-3/4	25	65	30	30	6	40,000	388
3000	1	15/16	2-11/16	31	39	30	35	5	40,000	392
3100	1	15/16	3-3/4	31	39	30	35	6	40,000	436
3200*	1	15/16	3-3/4	39	71	30	43	6	45,000	516

*Lateral wheels with nylon lining



AERIAL WIRE MARKERS

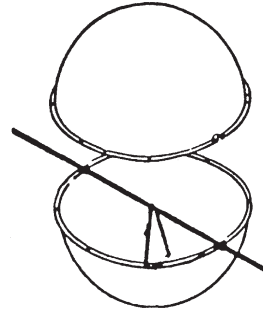
Use to mark power, communication, and guy wires at airport or helicopter approach areas, river and canyon crossings, overhead obstructions at construction sites, and migratory wild fowl refuge areas. These markers are made of fiberglass for long life and are made to FAA specifications in Bulletin No. AC707460-ID. Units will not slip, oscillate, chafe, or cause electrolysis or harmonic vibration.



Markers install in 10 minutes, need no maintenance, and will withstand hail.

Specials available upon request.

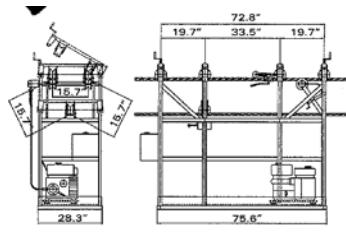
**CORONA PROTECTION COATING
REQUIRED ON INSTALLATIONS OVER
100KV. CALL FOR INFO.**



Cat. No.	Fits Wire	Weight
TWM-9"	up to 3/4"	1.75 lbs.
TWM-12"	up to 3/4"	3 lbs.
TWM-20"	up to 1"	4.5 lbs.
TWM-24"	up to 1-1/4"	7 lbs.
TWM-30"	up to 1-1/4"	11 lbs.
TWM-36"	up to 1-1/4"	19 lbs.
TWM-54"	Made to spec.	35 lbs.

AERIAL CONDUCTOR DOLLY

Aluminum alloy inspection trolleys that allow two persons in erected positions to inspect two, three and four bundled conductor lines. The trolleys are equipped with spacer and insulators surmounting device, stationary brakes, meter counter. Special models with different characteristics can be designed according to customer's needs.



Part Number	Number of Bundled Conductor Lines	Spacing [in]	Capacity [lbs]	Weight [lbs]	Engine		
					Gasoline	Cooling System	Starting System
6035	2	15-3/4	562	176			
6030*	2	15-3/4	562	243	4 HP	Air	By Handle
6045	3	15-3/4	562	198			
6040*	3	15-3/4	562	265	4 HP	Air	By Handle

*Motorized version

OVERHEAD LINES BICYCLES

The bicycles are suitable to fit aircraft warning spheres on single lines and to fit spacers on two, three and four bundled conductor lines. By pedaling forward, the bicycle moves backward in order to provide the operator with necessary working space. The bicycles are equipped with a disc brake on the driving wheel and with an additional safety clamp, which brakes directly on the conductor. A footage counter and safety chains are also provided. For models 6155 and 6140 the distance between conductors can be set from 13.77" up to 23.62" with pitch of 1.94". Special models with different characteristics can be designed according to customer's needs. Specify the distance between the conductors on the order.



Part Number	Description	Weight [LBS]	Optional Basket for Working Devices
6100	In alloy-light for single lines	42	6105
6120 (I = 15-3/4") 6130 (I = 17-11/16")	For three bundled conductor lines	121	6126
6155	In alloy-light for two bundled conductor lines	75	6156
6140	For three bundled conductor lines	141	6141



SAGWATCH

Cat. No. SLE

The principle of sagging by wave-timing has long been recognized. The use of the Sagwatch to determine sag simply, rapidly, and accurately can save many valuable man-hours by eliminating conversion tables and the setting and sighting of targets.

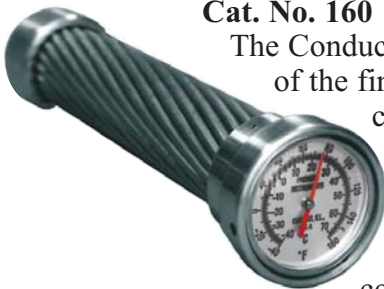


This high-quality instrument has a 7 jewel Swiss movement in a stainless steel case. It is water resistant, dust protected, shock resistant, antimagnetic, and self-compensating with an unbreakable mainspring.

Logarithmic scales are calibrated in feet and decimals for both 3rd and 5th returns of a mechanical wave providing direct reading of sags up to 100 feet.

CONDUCTEMPOR

Cat. No. 160



The Conductempor is constructed of the finest materials and contains a highly accurate bimetal thermometer mounted in a piece of aluminum alloy conductor in order to

accurately determine the temperature of the conductor being sagged, and not just the temperature of the air. With quick, accurate response to temperature variations, it may be used for any size ACSR or ACAR conductors. The temperature dial is a large 1-3/4" dial graduated in 2 degree increments for ease of reading.

Range: -40° to 160° F Length: 9"



POCKET THERMOMETER

Cat. No. 21412-2

These thermometers are made with Binoc tubing which magnifies liquid column for improved readability under all conditions. They are red Permacolor liquid filled for reading in poor light and are calibrated for total immersion.

SAGSCOPE

Cat. No. SL-SCOPE



With its bright, crisp, distortion-free optics this Sagscope is a rugged, high quality, compact device for accurate wire sagging. It is equipped with a 3 to 9 power zoom and cross hairs. Other features include a two-way bubble level and vertical, horizontal, and rotational adjustments for easy leveling under a variety of field positions.

Unit comes complete with a removable eye shade, lens caps, a variable adjustable mounting bracket which can be used on lattice tower structures or wood poles, and a High Density Polyethylene storage case.



DYNAMOMETER

These meters operate in any position and are rated at plus or minus 1/2% of full scale accuracy yet can be

subjected to accidental static overloads up to 50% without affecting performance. All models have an antiparallax dial.

Cat. No.	Capacity x Divisions	Safety Factor
5-01	1000 x 10 lbs	5:1
5-02	2000 x 20 lbs	
5-04	4000 x 25 lbs.	
5-05	5000 x 50 lbs.	
5-06	6000 x 50 lbs.	
5-08	8000 x 50 lbs.	
5-10	10,000 x 100 lbs.	
5-15	15,000 x 100 lbs.	
5-20	20,000 x 200 lbs.	4:1

ALL MODELS LISTED HAVE A 5" DIAL.





ELECTRONIC MEASURING

Cat. No. HL8

This unique, pocket size, *user friendly* instrument combines a **Laser Distance Meter** with **Visual Zoom Screen Targeting** and a **Tilt Sensor** making it the most versatile electronic measuring devise on the market.

Made for the outdoors, this *utility tough* instrument can measure Height, Span and Sag.



- RANGE UP TO 650'
- POWER RANGE TECHNOLOGY
- DIGITAL VISUAL ZOOM
- INTEGRATED TILT SENSOR
- INDIRECT MEASURING
- MULTIPLE MEASURING UNITS
- ADDING AND SUBTRACTING
- 30 "LAST VALUE" RECALL

Use the **Laser Distance Function** to measure distance, height, length, area, square feet, volume, etc. Switch on the Continuous Laser and mark a straight line with the visible beam.

The **Tilt Sensor** aids in the measurements above and can also be used to measure angles and pitch.

When outdoor areas are too bright or distances too far, use the **Visual Zoom Screen Targeting** function to make all measurements visually in place of the laser point. Just align target with the screen cross hairs and "shoot". Then repeat the process on additional targets as needed.

In addition to the utility construction applications shown to the right, many other common construction measurements can also be taken.

Cat. No. HLTP

Tripod; recommended for long distances and Visual Screen applications.

Cat. No. HL810P

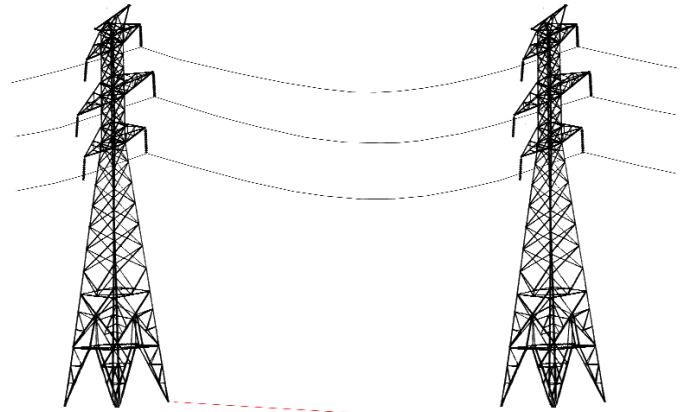
Target Plates; aids long distance applications.

Refer to instructions for specific instructions.

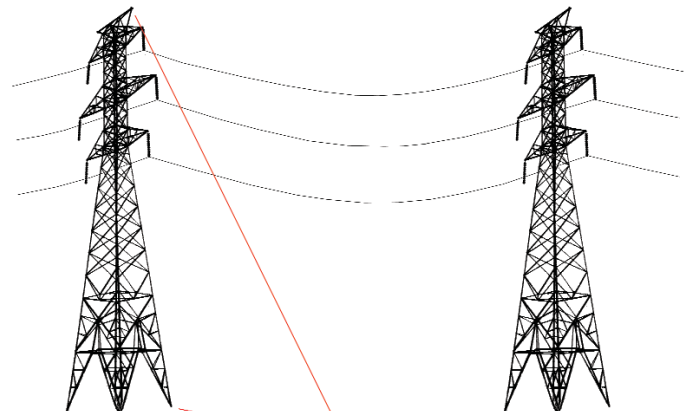
See page 51 for more models



When it is too bright or distance is too long for laser pointing, use **VISUAL SCREEN TARGETING** to:



Measure SPAN up to 650'



Measure HEIGHT

LASER RANGE FINDER

Cat. No. LT200

Quickly capture data for tower heights, span distances, right-of-way limits and vegetation clearances from a safe and convenient distance.

The built-in tilt sensor allows you to capture horizontal, vertical and slope distance data with 1-foot accuracy. Range 3,000'

